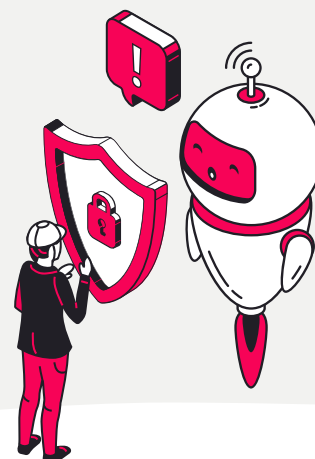


Protect your organisation with Connect AI-powered Threat Detection and Incident Response Service.



Stay ahead of evolving cyber threats.

As cyber threats continue to grow in complexity and sophistication, traditional security measures are no longer enough. AI-powered attacks, such as AI-generated phishing campaigns or automated malware that adapts to evade detection, are becoming more common and more dangerous.

Connect, in partnership with BLOCKPHISH, offers an advanced AI-powered Threat Detection and Incident Response Service designed to protect your organisation from these cutting edge, AI-enhanced cyberattacks. With our expertise, you can ensure your organisation is prepared to handle AI-driven threats and mitigate potential damage quickly and effectively.

Key features of our service.

AI-powered threat detection

- Protect against AI-driven threats that bypass traditional security systems.
- Stay ahead of evolving cyber risks with AI-informed detection methods that adapt to new attack techniques.

Incident response plans tailored for AI threats

- Establish clear, efficient, and effective protocols for responding to AI-enhanced cyberattacks.
- Ensure rapid reaction to potential security breaches, minimising impact and downtime.

Customised solutions for your needs

- Get a personalised AI-powered threat detection framework that fits your organisation's unique security requirements.
- Implement rules and strategies specifically designed to detect AI-based phishing, malware, and fraud.

Why choose Connect AI-powered Threat Detection and Incident Response Service?

- 1 Comprehensive protection**

Our service is designed to defend against the full spectrum of AI-enhanced threats, from phishing to advanced malware. By integrating AI informed detection methods into your threat detection and incident response strategy, you can better prepare for the next generation of cyberattacks.
- 2 Proactive defence**

Instead of reacting to threats after the damage is done, Connect helps you stay one step ahead. By continuously monitoring your security infrastructure with AI-informed strategies, we ensure that your organisation is prepared before an attack even occurs.
- 3 Expertise You Can Trust**

In partnership with BLOCKPHISH, we provide specialised knowledge and support that goes beyond standard security solutions. Together, we bring deep expertise in detecting and neutralising AI-powered threats, ensuring your systems remain secure.

What you'll receive

✓	Customised AI-powered threat detection framework <p>Tailored solutions that provide real-time, AI-driven threat detection, designed to meet your organisation's specific needs.</p>
✓	AI-focused incident response playbook <p>Clear, actionable response plans for AI-powered phishing, malware, and fraud attacks ensuring rapid and coordinated action when needed most.</p>
✓	Specialised detection rules and signatures <p>AI-specific attack detection signatures e.g., AI-generated phishing to quickly spot emerging threats.</p>
✓	Monitoring and logging configuration recommendations <p>Ensure your security infrastructure is optimised to detect and respond to AI-powered attacks with our expert configuration advice.</p>
✓	Threat intelligence reports and insights <p>Stay informed with up-to-date reports that analyse and highlight emerging trends in AI-driven cyberattacks.</p>
✓	Post implementation validation and training documentation <p>To ensure your security team is fully prepared to manage and respond to AI-driven threats effectively.</p>

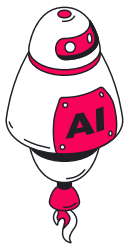
A comprehensive approach to defending against AI-driven threats.

Connect's AI-powered Threat Detection and Incident Response Service follows a structured, strategic approach to ensure your organisation is fully protected against evolving cyber threats. Here's how we help you stay secure:



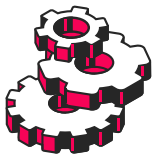
Initial assessment

We begin by evaluating your current threat detection and incident response capabilities to identify any gaps or areas for improvement.



Integration of AI-driven detection

Our team integrates advanced, AI-powered detection methods into your existing security infrastructure, ensuring you're prepared to spot and defend against sophisticated threats.



Tailored incident response plans

We design and implement response protocols specifically for AI-powered attacks, such as phishing, malware, and fraud, so your team can react swiftly when a threat is detected.



Defence optimisation

As cyber threats evolve, we provide your team with the tools and strategies to consistently monitor, evaluate, and strengthen your defences against emerging risks.

With this comprehensive approach, we ensure your organisation is equipped to detect, respond to, and recover from AI-powered threats minimising risk and maintaining resilience.

Be ready for the future of cybersecurity.

With the growing sophistication of AI-driven cyberattacks, your organisation's security needs to evolve. Connect's AI-powered Threat Detection and Incident Response Service, in partnership with BLOCKPHISH, ensures you're not just reacting to threats, but proactively defending against them.

BLOCKPHISH - Trusted experts in security solutions

BLOCKPHISH, an NCSC Assured Service Provider, brings together a team of seasoned security professionals with expertise spanning commercial CISOs, ex-Special Forces, intelligence services, and senior advisors to central Government. They are passionate about keeping organisations secure, and provide insightful, proven solutions to tackle complex security challenges. BLOCKPHISH provide a tailored service based on their deep understanding and years of experience in building robust security postures that mitigate the most prevalent cyber and physical security threats. They have proudly supported organisations across diverse global industries, including Government, Defence, Healthcare, Legal, Energy, Critical National Infrastructure, Not-for-Profit, Financial Services, and Telecommunications sectors.



HM Government
G-Cloud
Supplier



Crown
Commercial
Service
Supplier



National Cyber
Security Centre

Connect with us.

Proactively detect and respond to AI-powered threats.



+44 2070 751450 (UK) +27 10 476 0300 (SA)



info@weconnect.tech



weconnect.tech